

Ideas to Impact





Without upliftment of weaker and backward sections of society, our nation's dream of being a leading nation of the world shall remain unfulfilled.

- Shri O. P. Jindal

7th August 1930 - 31st March 2005
Founder and Visionary, O. P. Jindal Group

Ideas to Impact

At JSW Foundation, our unwavering commitment is rooted in meaningful engagement with communities and effecting impactful positive transformation in their lives. We channel this dedication through unique initiatives designed to empower communities, fostering prosperity and leaving an indelible mark on their well-being.

Contents

02	Chairperson's message	50	Skills and livelihoods
04	From the CEO's desk	56	Art, culture and heritage
06	Who we are	60	Sports promotion
10	Making a difference	70	Special projects
12	Health and nutrition	76	Celebrating achievements
24	Water, environment and sanitation	77	Our partners
32	Waste management	80	Our team
38	Agriculture and allied livelihoods	82	FY24 CSR outlook
44	Education		

Towards building an inclusive tomorrow



Our dedicated team and partners have worked tirelessly to turn challenges into opportunities. Together, we have made a significant difference in the lives of many and are committed to further expanding our impact in the future.

- **Sangita Jindal**, Chairperson, JSW Foundation



Developing and nurturing partnerships is crucial to deliver a concerted effort to achieve a collective impact on India's growth trajectory.

Dear Stakeholders,

I am delighted to present the accomplishments of JSW Foundation over the past one year. It has been a year of hope and community empowerment; our march of progress has been marked by a collective will to build a stronger, resilient nation, and forge a brighter future. Throughout this journey of transformation, we have encountered many moments of positivity and inspiration, commitment, and creativity.

We have expanded our outreach programs and introduced new services that have created a positive ripple effect in our society. Our dedicated team and partners have worked tirelessly to turn challenges into opportunities. Together, we have made a significant difference in the lives of many and are committed to further expanding our impact in the future.

Aligning corporate goals with community impact

India is poised to become a USD 10 trillion economy by 2033. As India advances in its 'nation-building' phase, it is important to align and measure progress in our corporate goals, with community impact at the core. India holds a unique position in the realm of Corporate Social Responsibility (CSR), being the first country to enshrine CSR into a legal structure and making it mandatory for qualifying companies.

In India, a nation characterised by rich cultural diversity and economic disparity, the ethos of giving back to society has long been deeply ingrained within the fabric of businesses.

Our dedicated team and partners have worked tirelessly to turn challenges into opportunities. Together, we have made a significant difference in the lives of many and are committed to further expanding our impact in the future.

CSR embodies shared responsibilities and a collective consciousness. Beyond the pursuit of profit, a growing number

of corporations acknowledge their duty to contribute meaningfully to the well-being of the communities they serve. To accelerate greater transformation, we must explore innovative approaches and enhance collaboration. Developing and nurturing partnerships is crucial to deliver a concerted effort to achieve a collective impact on India's growth trajectory. This Annual Report is a testament to the power of purpose-driven collaborations between the private sector, civil society and governmental entities.

We thank all our partners, stakeholders, advisors and well-wishers for being an integral part of our journey. With their support, we will continue to empower communities with sustainable livelihoods, inspire change and build a brighter future for all. We look ahead with renewed zeal, as we strive to transform more ideas into impactful realities, together.

Sangita Jindal
Chairperson, JSW Foundation

Challenging the status quo



Our journey from 'Ideas to Impact' began in 1988. It has gathered significant momentum over the past few years, touching lives across 33 locations in 13 states through diverse initiatives.

– Ashwin Saxena, CEO, JSW Foundation



The riskiest thing we can do is just maintain the status quo.

– Bob Iger, CEO, The Walt Disney Company

Dear Stakeholders,

Ideas fuel change and progress, holding the potential to transform lives and the world itself. Ideas can motivate one to try out the seemingly impossible, can overcome thought barriers, and interests and sometimes, even justify interests at a deeper level. Ideas have the power to change the world by challenging the status quo! Yet, for these ideas to create lasting, sustainable impact, innovation, collaboration, strong systems, processes and leadership play crucial roles. We have innovated and may have even failed at times, but have never let the risk-taking take a backseat, taking challenges head-on.

Our journey from 'Ideas to Impact' began in 1988 and gathered significant momentum over the past few years, touching lives across 33 locations in 13 states through diverse initiatives. Our Annual Report only scratches the surface of our ongoing efforts. Our programs evolve with communities' needs and aspirations, making this Report merely a milestone, showcasing the direction taken, partnerships forged, communities empowered, and the budding impact of our transformative ideas.

At the 10th JSW TOI Earth Care Awards, we introduced Earth Exponential (earthexponential.org), a platform uniting climate solutions. It fosters collaboration, exchange of ideas, and thought-leading knowledge sharing among grassroots implementers, knowledge institutions, and donors. The platform is active, sharing resources and sparking initial collaborations between

donors and implementers. McArthur Foundation is supporting this initiative funded and co-created by us and the India Climate Collaborative.

The social sector demands diverse technical skills to address critical issues. JSW Foundation Fellowship identifies and nurtures passionate youth as social changemakers. It encourages Fellows to support each other, delve into rural India's challenges, and implement solutions they're passionate about. This year, 12 Fellows worked on various projects across our locations.

India's pioneering Skill Impact Bond, 15 months into its journey, has enrolled 18,000+ young Indians from 18 states and Union Territories. Developed under the Ministry of Skill Development and Entrepreneurship, this initiative focuses on job placement and retention through outcome-driven strategies.

We collaborated with Social Alpha and H&M Foundation for the WasteTech Venture Growth and Scale Up Program to scale sustainable waste management solutions in Dolvi, Maharashtra and Vijayanagar, Karnataka, enhancing solid waste management in nearby villages.

In collaboration with Hindustan Unilever Limited, we've established 10 Suvidha Centres targeting low-income urban areas in Mumbai. They offer essential sanitation services such as safe toilets, filtered drinking water, showers, and laundry under one roof.

As part of the Government of India's Light House Initiative, 75 model Open

Defecation Free (ODF) blocks will serve as learning labs. JSW Foundation plans to elevate 45 villages across eight Gram Panchayats to ODF++ status, ensuring 56,000+ households have access to individual or community toilets along with effective waste management practices.

Art and culture shape our heritage, and JSW Foundation has long championed the preservation of cultural heritage. This year, we restored Mumbai's historic David Sassoon Library and Reading Room, part of the city's Victorian Gothic and Art Deco ensembles, and a UNESCO World Heritage Site, returning it to its original splendour.

Our initiative, Project Sakhi, intertwines plastic waste management with women's livelihoods. This led to the establishment of a handloom school, drawing more women into this endeavour. Now, Hampi Art Labs aims to foster collaboration between global and local artists, nurturing creativity.

This Report exemplifies our commitment to turning innovative ideas into lasting change. Year after year, across our programs, we aim to drive impactful change and transform lives at scale.

Stay tuned for our next edition, where we'll unveil a high-impact, large-scale program aimed at empowering women's livelihoods.

Happy reading!

Ashwini Saxena
CEO, JSW Foundation

About JSW Foundation

JSW Foundation, established in 1988, is the social development arm of the USD 23 billion JSW Group and is one of India's leading CSR foundations. Driven by the philosophy that each life is important, we work towards ensuring that everyone gets the opportunity to flourish.

Our purpose is to continually enable social impact to change how our children learn, how we deal with climate change, how communities access health, how skills can be honed to achieve sustainable livelihoods and how sports talent can be nurtured to reach a global platform. We are committed to creating a sustainable future and have undertaken various waste management efforts to foster a circular economy. We engage in active collaboration with farmers, advocating for inclusive and sustainable advancements in income generation.

As an enabler of an equitable future for all, we are empowering our communities to be the driving force behind developing a prosperous and sustainable nation.



Our vision

Empower communities with sustainable livelihoods.



Our mission

Propel citizens to better health, education and employment opportunities, and encourage sustainable development in key areas.



Our approach

Our interventions are oriented towards achieving better outcomes in rural communities by adopting the SAMMS approach – Strategic, Aligned, Multi-stakeholder, Measurable and Sustainable.

Shared value

Strategic

Linked to business case

Aligned

Company not acting alone

Multi-stakeholder

Avoid dependency

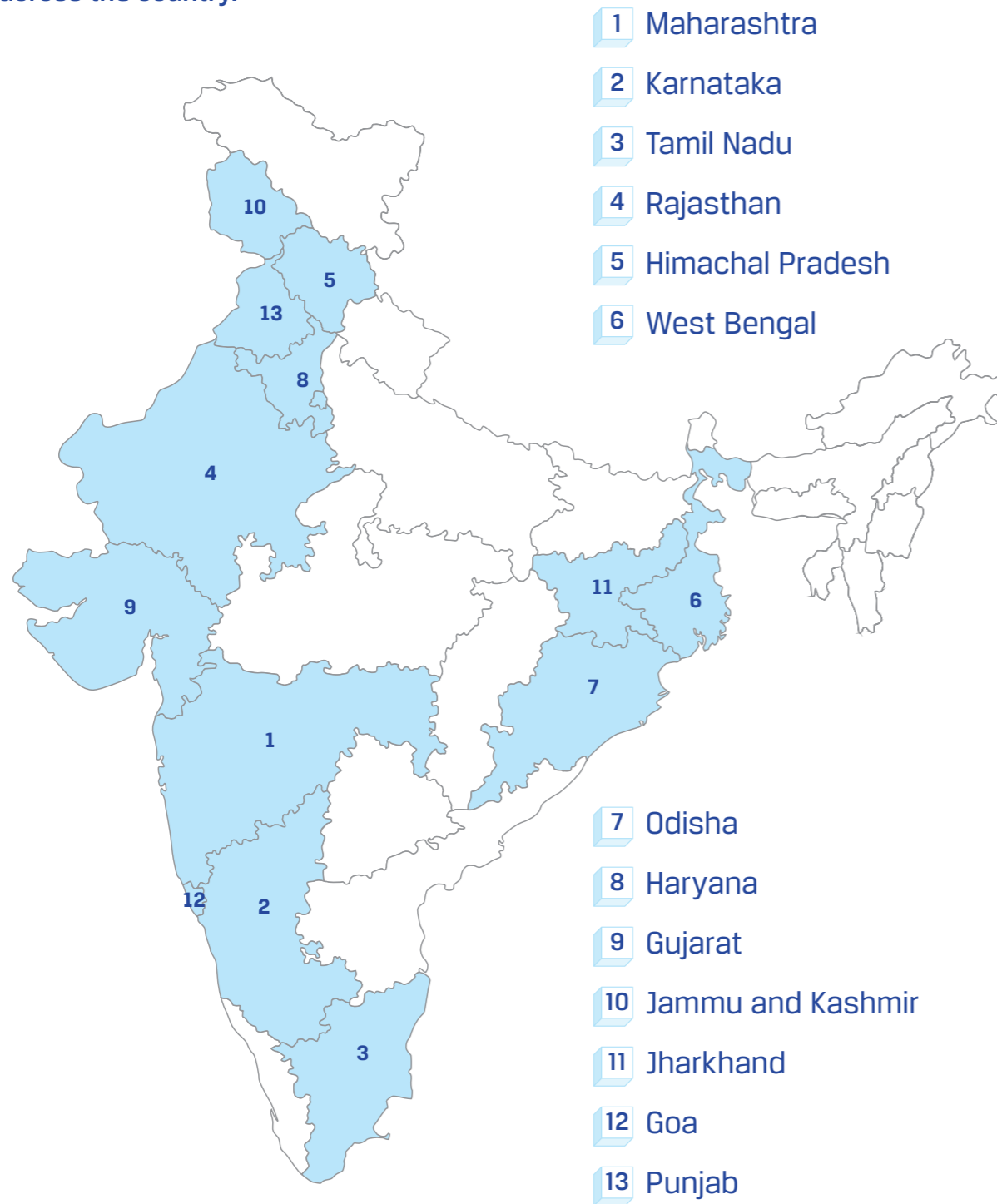
Sustainable

Demonstrable

Measurable

Impact at scale

Our strategic presence across 13 states allows us to connect with different communities, expand our reach and achieve long-term sustainable change across the country.



Note: Map not to scale

Focus areas



Health and Nutrition



Water, Environment and Sanitation



Waste Management



Agriculture and Allied Livelihoods



Education



Skills and Livelihoods



Art, Culture and Heritage



Sports Promotion

Health and Nutrition



200,000

Truckers reached under Project Humraahi

105,000+

Lives transformed through vision screening camps, including distribution of spectacles and cataract surgeries

415,000

People reached through healthcare outreach programs

250,000+

People reached through JSW Foundation's institutions

Water, Environment and Sanitation

1,35,000

Households covered under integrated WaSH programs

2 Mn+

Mangrove saplings planted over 380 hectares



15.8 Mn m³

Water recharged

Waste Management



115,550

Households reached

100+

Livelihoods generated for lower income groups

2,800 tonnes

Wet and dry waste prevented from reaching landfills

Agriculture and Allied Livelihoods

1,000+

Farmer groups mobilized

33

Farmer Producer Organizations supported across three states

₹ 50+ cr

Turnover through FPOs

50,000

Farmers



Note: All figures mentioned are till date.

Education



1,000+

Anganwadis developed

13,000+

Students across nine Jindal Vidya Mandirs (JVMs)

3,50,000+

Children benefitted through various educational initiatives

8,000+

Students awarded JSW Udaan Scholarships

Skills and Livelihoods

4,500+

Women supported under JSW Shakti

1,300+

Women Self Help Groups (SHGs) supported

928

Artisans supported under various livelihood programs

25,000+

Women impacted through livelihood programs



Art, Culture and Heritage



Ongoing: Conservation, restoration, and maintenance of the Mughal Gardens of Kashmir, particularly Shalimar Bagh and Nishat Bagh collaboration with the Government of Jammu and Kashmir.

Completed: Restoration of the David Sassoon Library and Reading Room in Kala Ghoda, Mumbai.

Sports Promotion

200

Children trained under Project Shikhar

775+

Medals won by sports persons





HEALTH AND NUTRITION

Everyone deserves access to quality healthcare. We strive towards enhancing lives, delivering superior healthcare facilities and ensuring widespread access to affordable healthcare.



Enabling healthcare for all

JSW Foundation is committed to providing quality healthcare to all, especially in the rural areas where access is limited. We aim to enhance India's health and nutrition status with health outreach programs, institution-building and community interventions.

Our community health initiatives are designed keeping in mind the specific needs of the communities we serve. We are working towards empowering institutions to provide equitable, affordable and specialised healthcare services.

Through outreach, we aim to achieve improved health outcomes for communities, enabling them to access healthcare facilities while strengthening existing government health programs.



60,811

Truckers reached through Project Humraahi

54,000

Individuals benefitted through vision screening and correction camps

275,000+

Individuals benefitted through community health camps and outreach

Our primary avenues



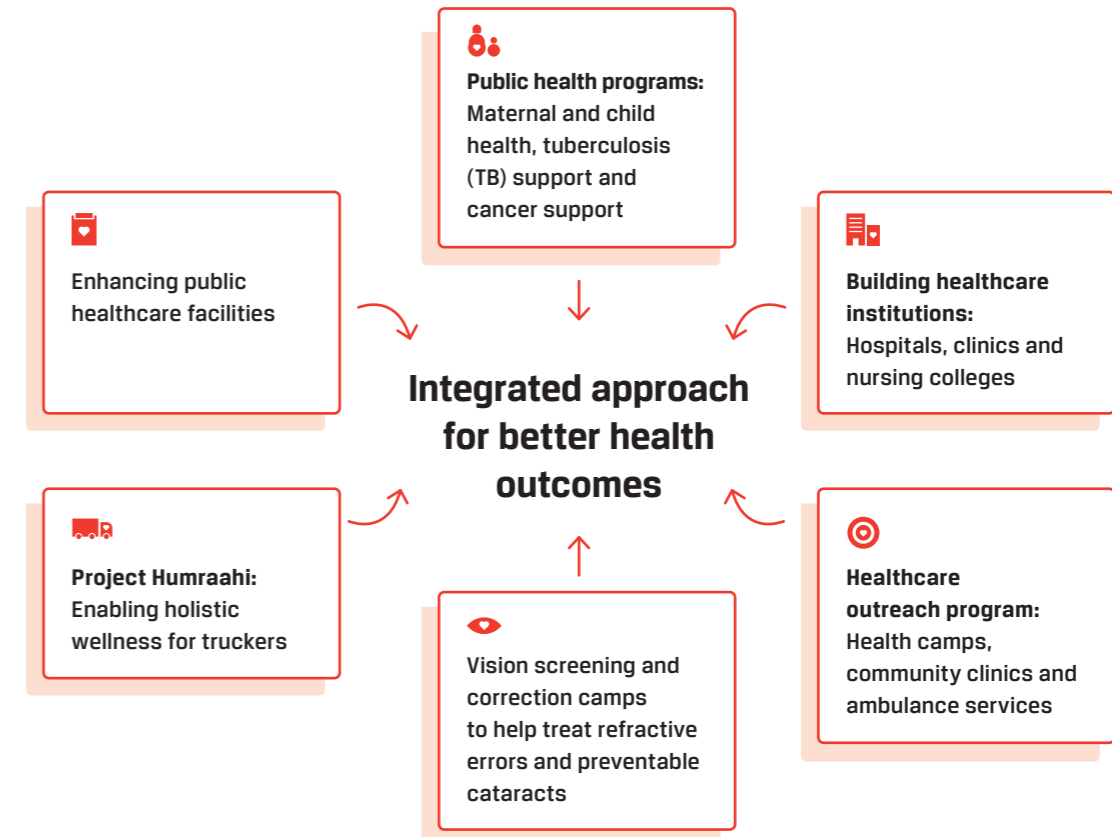
Building institutions



Community interventions



Strengthening healthcare systems



Building institutions for a healthy nation

JSW Foundation aims to further strengthen its existing institutions to provide affordable and quality medical education and specialised healthcare services.

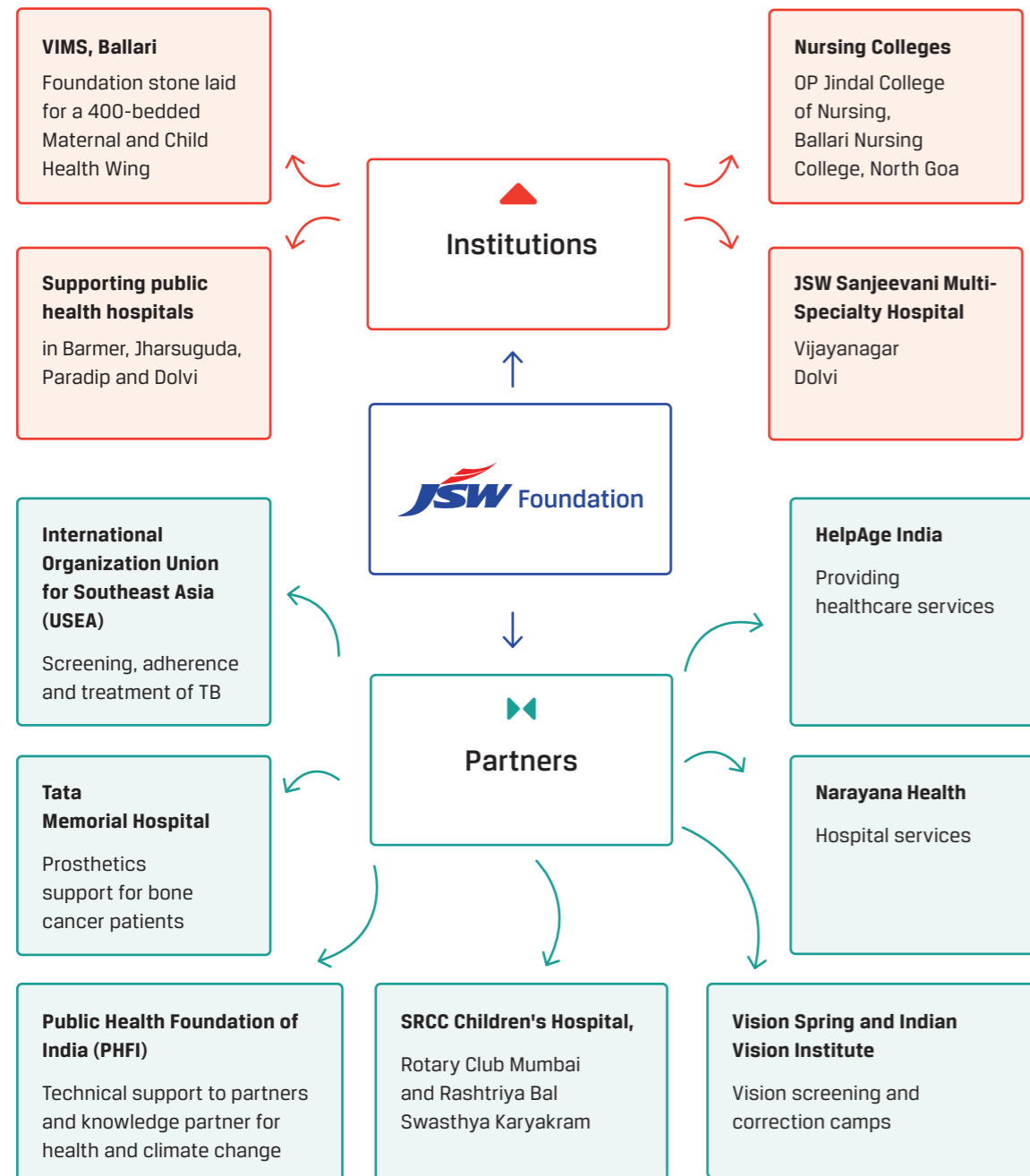
Our health interventions work towards building strong networks in our areas of operation by linking outreach to targeted public health programs within our health institutions and with partner institutions.

Key interventions

Building institutions of care

Strengthening public healthcare capacity

Quality healthcare for all



Building institutions of care

The improvement of services and infrastructure across JSW Foundation hospitals and the hospitals we support is crucial. This enhancement strengthens the foundation for effective and widespread delivery of vital medical services to the communities we serve.



Karnataka

Vijayanagar Institute of Medical Sciences (VIMS), Ballari

Foundation stone laid for a 400-bedded Maternal and Child Health wing at VIMS, Ballari in the presence of dignitaries including the Chief Minister and Deputy Commissioner, Ballari.



Rajasthan

District Government Hospital, Barmer

Upgradation of operation theatres (OTs) and construction of a post-operative ward, with the capacity to cater to 3,000+ individuals per year, were some key initiatives undertaken this year.



158

Nurses trained at O. P. Jindal College of Nursing, Vijayanagar

93,000+

Lives impacted through the JSW Sanjeevani Multi-Specialty Hospital, Vijayanagar

25,000+

Lives impacted through the JSW Sanjeevani Multi-Specialty Hospital, Dolvi



Strengthening public healthcare facilities

Our initiatives play a pivotal role in addressing and meeting the healthcare needs of the communities we serve.

Amidst an evolving healthcare landscape, our strategic endeavours and transformative initiatives are aimed at fortifying the foundational pillars of public healthcare, fostering resilience and accessibility in the communities we serve.



Safe deliveries, strong communities

To reduce maternal and infant mortality among communities, JSW Foundation undertakes initiatives to ensure safe institutional deliveries. This includes the promotion of institutional deliveries, antenatal and postnatal care to pregnant and lactating women, and raising awareness on the prevention and treatment of anaemia.

235+

Pregnant and lactating women supported

2,699

Safe deliveries along with antenatal and postnatal care provided



Ensuring a TB-Mukt India

With the aim to make India tuberculosis (TB) free, JSW Foundation will work in 1,000 villages across three Indian states. Aligned to the National Health Mission and the Government of Maharashtra, the TB Mukt Panchayats initiative is a significant step to ensure India eliminates TB by 2025.

In collaboration with the International Organization Union for Southeast Asia (USEA) and India Health Fund (a Tata Trusts initiative), this ambitious initiative prioritises mass screening for early detection, targeted treatment, and community participation to eradicate TB.



Maharashtra

Managing malnutrition

We have scaled up our work in malnutrition management among mothers, adolescents and children in Maharashtra. This intervention follows the remarkable success we achieved, significantly reducing 12% points in underweight and 23% points in wasting among children under the age of five. The program covers two blocks each in Palghar and Raigad and one block in Thane. Our focus remains on enhancing the nutrition status among mothers, adolescents, and children in these areas.

5,376

People with improved nutritional status

Strengthening public healthcare capacity



Image for representational purposes only

Healing hearts

Poverty, combined with insufficient health coverage for young children, is a major obstacle that prevents people from seeking timely hole-in-the-heart surgeries, worsening the defect to a point where treatment becomes more challenging. In order to enable access to this critical surgery, JSW Foundation began its intervention to support corrective surgeries for congenital heart defects. This intervention was

recently scaled up to enable access for a wider population in collaboration with the government's Rashtriya Bal Swasthya Karyakram, the Rotary Club of India, SRCC Children's Hospital and Narayana Health.

181
Corrective hole-in-the-heart surgeries performed



Towards a clearer vision

JSW Foundation collaborated with partners to conduct eye examinations for individuals of all age groups, ranging from teenagers to the elderly. We also aided with cataract surgeries, thus preventing irreversible blindness.

1,900
Cataract surgeries

12,330
Individuals provided with prescription glasses



Compassionate care

JSW Foundation extends critical support to patients through its neurological initiative, offering comprehensive therapeutic aid at the Dolvi and Vasind Neurological Centres, spanning from paediatric to geriatric care. Additionally, in partnership with Tata Memorial Hospital, we provide prosthetic support for bone cancer patients undergoing treatment.

249
Individuals provided with neurological support



Project Humraahi: Healthcare for truckers

Truckers are frequently overlooked in the healthcare system, leading them to neglect their own health. JSW Foundation offers customised primary healthcare services, including eye check-ups and audiometry, at JSW sites. The project is evolving to encompass guidance on children's education, financial planning, and mental health counselling, providing comprehensive and holistic interventions.

60,811
Truckers covered under Project Humraahi

Quality healthcare for all

We are actively enabling communities with access to quality healthcare through health outreach programs through mobile vans, community clinics and ambulance services.



24x7 emergency care

Aiming to provide 24x7 emergency care, JSW Foundation has deployed ambulances to aid in preventing fatalities caused due to an increased waiting time or a lack of access to healthcare facilities. These ambulances are equipped to provide basic as well as advanced life support along with staff trained in referral services.

19,000

Lives saved through emergency services

59,000

Community clinics

214,000

Health camps

Rising above social stigma

In the quiet corners of Jajang village in Odisha, Laxmi Munda, a resilient 33-year-old woman, lives with her family of three.

Life took a devastating turn when she was diagnosed with tuberculosis (TB). With her husband as the sole breadwinner, the daunting task of arranging finances for her treatment loomed large. Laxmi's deteriorating health became the subject of hushed conversations, surrounded by the isolation of social stigma. Overnight, their family was ostracised. The community that she called 'home' felt like a distant memory.

Laxmi faced a challenging time in her life. Despite the difficult situation, her husband remained steadfast in support. They felt lost and unsure of where to seek help. The nearest hospital was approximately 20 kms away. As Laxmi's condition deteriorated, her husband reached out to an Accredited Social Health Activist (ASHA), who promptly connected him to our ambulance services.

At the Community Health Centre (CHC) in Joda, Odisha, as her treatment progressed, Laxmi started taking steps toward a new life filled with hope.

We used to have misconceptions about leprosy and TB. Thanks to ASHA didi and Sandhya didi, our village-level coordinator, for educating us about these diseases and assuring us of assistance in their treatment. We are thankful to the JSW Foundation team for their support and providing quality healthcare services through dispensaries, health camps and the ambulance.

- Laxmi Munda





WATER, ENVIRONMENT, AND SANITATION

We take pride in showcasing our ongoing journey in water, environment and sanitation initiatives. Our approach, deeply rooted in community collaboration, has been instrumental in achieving our goals. Together, we continue to champion a greener and sustainable future for all.

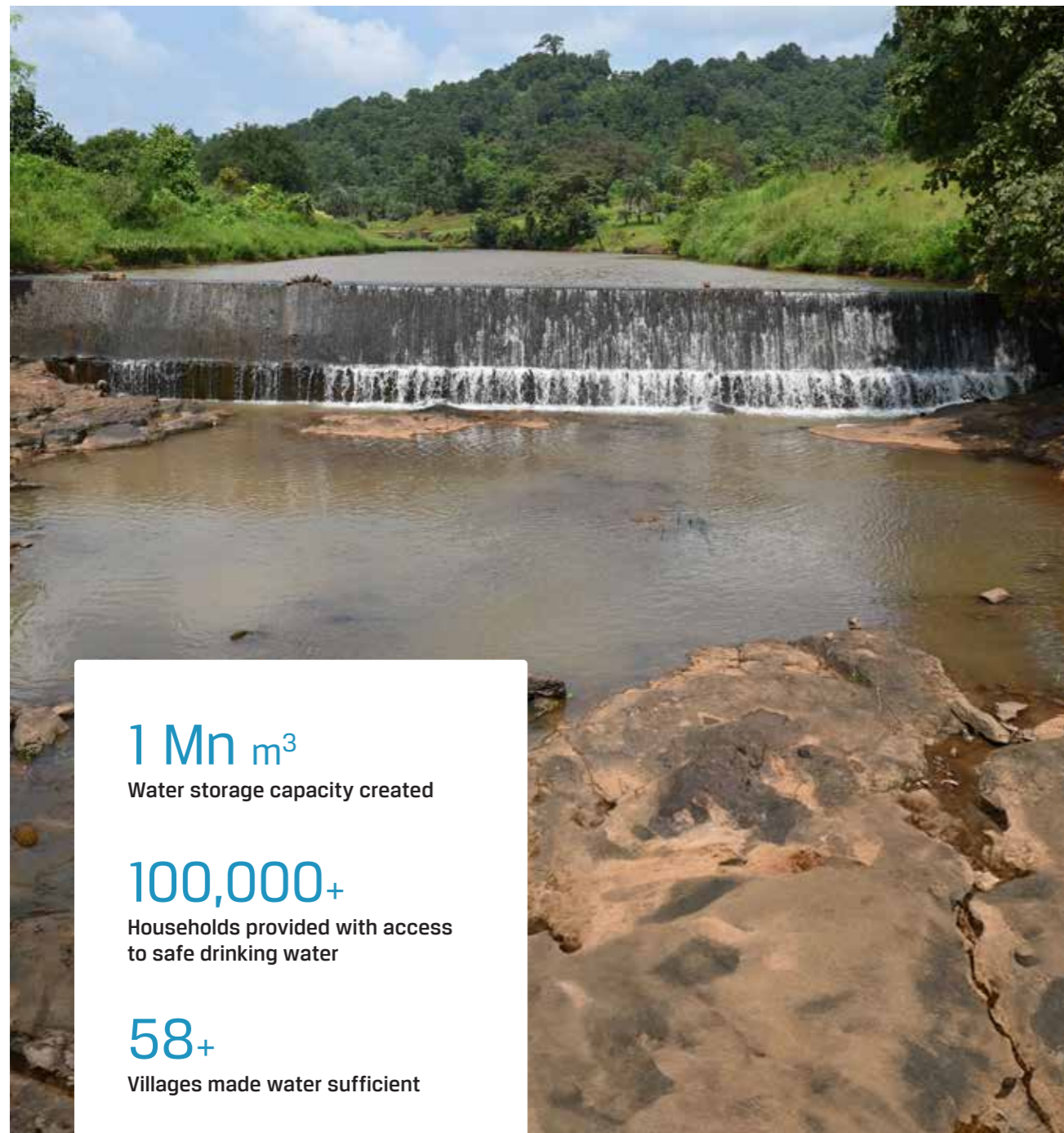




Charting our own water future

Access to safe and clean water plays an important role. This vital resource boosts better livelihoods and helps communities thrive. We take special care and ensure that children have access to safe drinking water.

Water, being a shared natural resource, requires effective management. Drawing upon years of experience in implementing sustainable water projects, JSW Foundation employs a community-centred approach to bring clean water to remote areas and the most vulnerable communities.



1 Mn m³

Water storage capacity created

100,000+

Households provided with access to safe drinking water

58+

Villages made water sufficient

Aligning with national development goals

Our approach centres on identifying and executing tailored solutions for each community we work with. Aligned with the national Jal Jeevan Mission, our efforts range from constructing and repairing open borewells, installing roof rainwater harvesting structures, and erecting ground and elevated storage reservoirs.

We collaborate with Gram Panchayats to lay pipelines in areas where water sources are available. In FY23, 40+ villages have been made water-sufficient.



Rajasthan

Barmer

Due to the lack of access to water, walking three kilometres to fetch water is a daily routine for women and children in Barmer. Through focussed interventions, drinking water has now been made accessible even in remote settlements.



Himachal Pradesh

Kutehr

Spring water sources strengthened for providing drinking water to villages on hill slopes in high altitudes where water from the springs is the only source of water.

Building solutions for water security

Water is a critical determinant of our future. To ensure its responsible use and to promote equitable and distributed access to water, we have invested in water-efficient harvesting structures, implemented soil and moisture

conservation measures, and conducted treatments to mitigate soil erosion. We engage with local communities to empower them with greater control over the management of these water structures.

Nurturing a greener planet

The health of forests is crucial for maintaining ecological balance, sustaining livelihoods, driving economic growth, and enabling carbon sequestration. This is especially significant in India, where numerous forests serve as habitats for some of its most marginalised citizens.

In our commitment to enhance India's green cover through nature-based solutions, we regularly organise tree plantation drives in partnership with the government and local authorities. Our objective is to plant indigenous and local tree species that are better suited to the local climate and soil conditions.

We empower Self Help Groups (SHGs) to facilitate and manage tree plantations and establish nurseries, which also serve as a source of livelihood for local women.



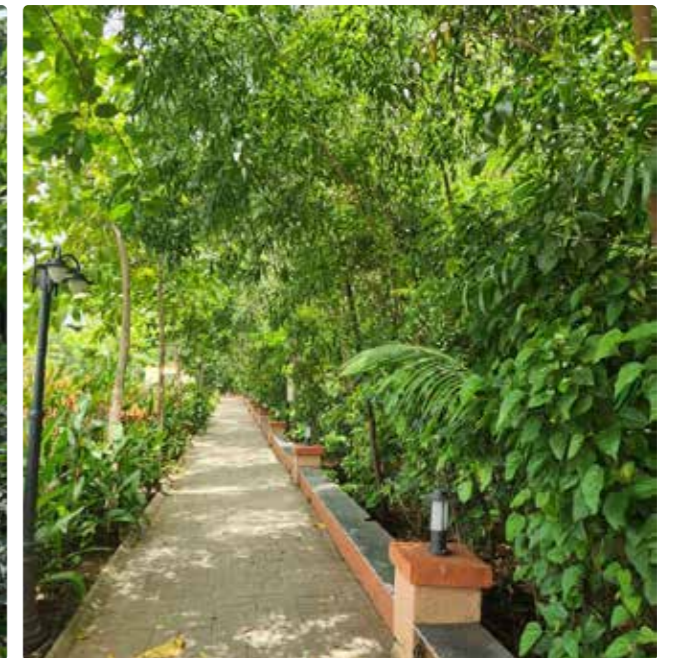
Rajasthan

Greening Barmer: An oasis blooms in the desert

Picture this: 2,000 resilient native grass and plant saplings, meticulously nurtured across 10 hectares, breathing life into the once-barren landscape of Barmer, Rajasthan.

Over the past five years, we have planted a total of 3,730+ saplings, along a five-kilometres stretch. This isn't just afforestation; it's the creation of a green oasis, reflecting our dedication to a greener, more vibrant future.

3,730+
Saplings planted



Developing Miyawaki forests

JSW Foundation, in collaboration with Tarapur MIDC, has developed the JSW Miyawaki Forest and Biodiversity Park in Tarapur, Maharashtra.

The Miyawaki method is a unique method of planting two to four different types of indigenous trees within every square metre. These forests grow 10 times faster, are 30 times denser and harbour 100 times more biodiversity. As a result, these forests offer viable solutions for cities seeking to rapidly enhance their climate resilience.

The JSW Miyawaki Forest and Biodiversity Park is a dense cover of native trees spread over a two-acre regenerated dump yard. It has positively contributed to raising the water table. It hosts over 8,000 trees, attracting butterflies, birds, and other animal species, with a survival rate of 99%. To date, the park has welcomed more than 100,000 visitors.

8,000+
Native trees planted



Tamil Nadu

Following our efforts in Tarapur, we have initiated the replication of this model in Salem, Tamil Nadu. The forest covers 26,000 sq. ft. with 10,000 native saplings. Tuticorin and Dharapuram have followed suit, creating a dense cover of indigenous trees.

15,000+
Saplings planted using the Miyawaki technique



Comprehensive sanitation for all

Access to comprehensive sanitation, including safe water and hygiene, is a fundamental human necessity crucial for a nation's health and well-being. These elements play an important role in safeguarding us during infectious disease outbreaks.

At JSW Foundation, our ongoing community-wide awareness campaigns aim to integrate essential behavioural changes into our programs. These efforts are designed to transform comprehensive, safe and sustainable sanitation, particularly for marginalised communities.

Our efforts are centred on the introduction of decentralised waste management solutions and the provision of comprehensive and safe water supply facilities. This has created livelihoods in the recycling industry and has enhanced community involvement in waste management. Further, it has increased awareness of the role that each individual plays in maintaining the nation's overall health.

35,000+
Households covered under integrated WaSH programs



Securing farmers' livelihoods with watershed management

Amid the serene landscapes of Alibag taluka in Maharashtra's Raigad district lies the village of Kusumbale. Most of its residents are farmers, relying heavily on rainfed agriculture as their primary source of income. While the rainy season is a boon to them, the months that follow are marked by parched fields, struggling crops and the harsh realities of water scarcity, poor agricultural yield and financial hardship.

Among the many weathered faces facing this challenge, one stands out – Santosh Shimagya Naik, a 52-year-old tribal dweller who has called Kusumbale home for more than seven decades. Santosh has been cultivating vegetables and paddy crops for the last 30 years.

The absence of an alternate water source makes farming a less profitable venture for farmers like Santosh. To make ends meet, he and others often had to take on the role of daily wage labourers. "We have to walk long distances to fetch water for cultivating vegetables. During the Rabi season, insufficient soil moisture damages the pulse crop, resulting in huge losses. At the time of the crop yield, crops would be damaged due to the land drying up," said an exasperated Santosh.

Santosh's story echoes the struggles faced by many farmers nationwide, heavily dependent on the monsoons. Their economic stability hangs by a thread post-monsoon season.

To alleviate this, JSW Foundation constructed a community check dam, which brought immense relief to the villagers. Despite delayed monsoons, the dam's reservoir facilitated year-round cultivation of foodgrains and vegetables for Santosh and fellow farmers. It enhanced soil moisture and notably bolstered pulse yields.

I've seen a significant rise in my income since the check dam was constructed. Previously, I would earn ₹ 5,000 to ₹ 7,000 from paddy farming and around ₹ 4,000 to ₹ 5,000 from cultivating vegetables and pulses. But now, the income generated from vegetable farming alone has increased to a minimum of ₹ 8,000.

- Santosh Shimagya Naik





WASTE MANAGEMENT

Leading the charge for a sustainable future, we revolutionise waste management efforts, promoting awareness and driving a shift towards a circular economy.



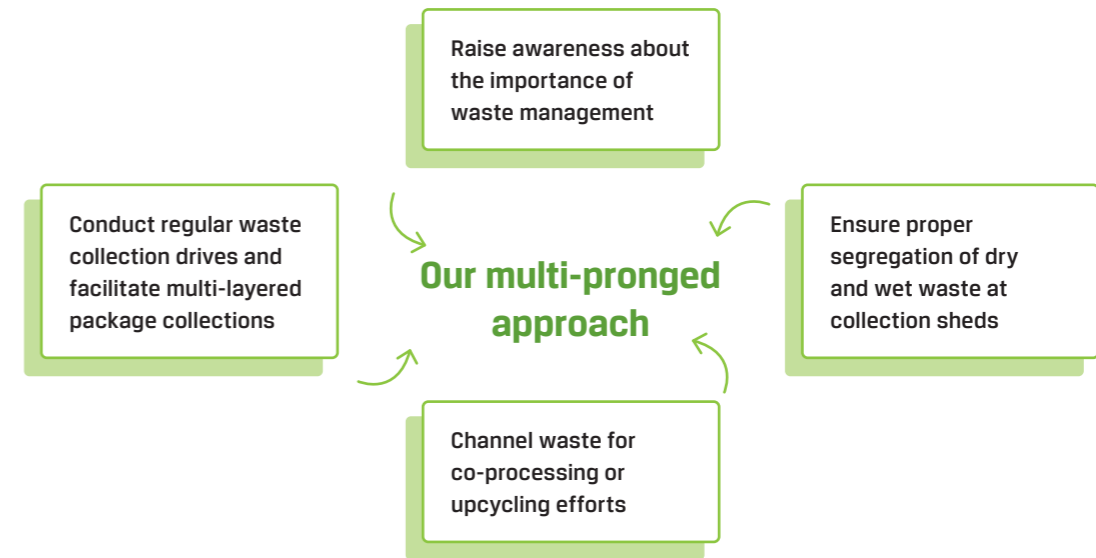
Moving towards a circular economy

Expanding settlements, population growth, rising incomes and evolving lifestyles are causing both urban and rural areas to witness an escalation in waste generation, posing significant challenges to effective waste management and environmental sustainability.

JSW Foundation's waste management mission centres around embracing the principles of a circular economy, essential for the environmental health of our planet.

Most villages are not equipped with proper waste collection or disposal mechanisms. As a result, local communities struggle with managing complex waste categories such as e-waste and hazardous waste.

To combat this, we have adopted a standardised approach that includes conducting door-to-door collection drives, mobilising the community and raising awareness. We are also enabling the infrastructure required for hazard-free waste segregation, composting wet waste and its co-processing. Encouraging alternate livelihoods and waste upcycling, our goal is to empower community members to derive high value from waste.



27,350

Households reached through various initiatives

12,000 kg

Multi-layered packages collected

2,673

CO₂ emissions mitigated



Active participant in the Swachh Bharat Mission

With rapid urbanisation, systematic management of waste emanating from households, industries, and markets is crucial to avert any adverse impact on both the environment and public health. These challenges are particularly pronounced in smaller towns and villages, where the absence of advanced and large-scale waste management systems, common in larger cities, intensifies the need for targeted interventions.

In alignment with this commitment, our focus is on reducing and eliminating mixed waste in our townships and Direct Impact Zones (DIZ), areas which are significantly affected by rapid urbanisation and increased waste generation.



A community-driven approach to waste management

We implemented our solid waste management program in Ratnagiri, Maharashtra. Regular beach clean-up drives with active participation from students and community volunteers were conducted. The collected waste was meticulously segregated into wet and dry categories before undergoing processing and upcycling.

1,880 kg
Dry waste collected

1,890
People made aware and encouraged to segregate waste

From adversity to community champion

A native of Sakhar Mohala village in Jaigad, Maharashtra, Makbul Hasan Guhagarkar (60) hails from a lower-middle-class family. Working as a sweeper at a local mosque, he sought additional employment opportunities to provide for his loved ones. Unfortunately, his low income and the challenging circumstances arising from it led to his family leaving him.

In an effort to improve Makbul's situation, we connected him with a Self-Help Group (SHG) that proved to be the turning point for him. Shortly thereafter, he joined JSW Foundation's waste management program. Demonstrating a strong sense of responsibility, Makbul earnestly began the task of cleaning community spaces and tourist spots in the village.

While collecting dry waste plastic twice a week, he initiated efforts to raise awareness about the harmful effects of plastic disposal in the sea, encouraging people to hand over plastic waste to him instead. Over three years, he collected an impressive 4.5 tonnes of dry plastic waste. As a 'Swachhata Mitra', his dedication paid off. This led to a significant increase in his family's annual income, from ₹ 24,000 to ₹ 60,000.

The enhanced financial stability played a key role in reuniting Makbul with his family. His village is a much cleaner village now, with its residents disposing dry plastic waste more effectively. Makbul's continued efforts and commitment earned him accolades from the Gram Panchayat sarpanch and SHG members. Makbul not only earns a sustainable livelihood but has also emerged as a key waste management resource in his community.





AGRICULTURE AND ALLIED LIVELIHOODS

We work alongside farmers and individuals to promote secure, inclusive and sustainable income growth through agriculture and allied livelihoods.



Enhancing farmers' lives

At the heart of our mission lies a clear goal: to enhance the quality of life of 100,000 farmers across India.

JSW Foundation is committed to providing comprehensive support to farming communities by imparting skills in both agricultural and non-agricultural activities while ensuring environmental sustainability. Our inclusive agri-livelihood model focuses on strengthening the value chain, from production to marketing, with the aim of promoting sustainable incomes for farmers.

Through our programs, we empower them with the knowledge and resources crucial for reducing input costs, enhancing crop productivity and improving market linkages.

Our program covers

Community owned and driven programs

Institutional capacity building

Advocating less water-intensive farming techniques

Promoting improved practices

Sustainable interventions

Strategic partnerships through government departments, NGOs and other key stakeholders



Augmenting farmers' earnings

We elevate farmers' socio-economic status through strategic initiatives around organic farming, horticulture, dairy and non-farm activities, contributing to comprehensive rural development.

A holistic road to development

In Jaigad, Maharashtra, we administer a livelihood development program to elevate the socio-economic status of households. This initiative places emphasis on Self Help Groups (SHGs) within Community Based Organisations (CBOs), engaging in activities ranging from organic farming, dairy production and various non-farm activities. Partnerships with government Agricultural and Animal Husbandry Departments, Gram Panchayat, farmers' clubs and progressive farmers drive this collaborative effort.

200
Farmers trained in organic vegetable production

90
Farmers received training in dairy-related livelihoods

75
Households benefitted from biogas support



Building sustainable livelihoods

Our ongoing initiative to support aquaculture is an integral part of our broader focus on allied livelihoods in Jaigad, Maharashtra. By providing technical training to local farmers, we empower them with essential skills for effective farm management and the implementation of sustainable practices. Our efforts aim to cultivate sustainable aquaculture practices, improve local livelihoods and contribute to the economic growth of the community.

This year, 14 open-sea cage facilities dedicated to aquaculture activities were established and 15 ornamental fishing initiatives were supported as part of our Allied Livelihoods initiatives.



Himachal Pradesh

Sowing seeds for collective growth

JSW Foundation has undertaken community orchard development on unused Gram Panchayat land in Kinnaur, Himachal Pradesh, where horticulture is a major occupation. Over three years, we diligently worked on cultivating and maintaining these orchards.

Recognising the transformative potential of thriving community orchards, we extended our efforts to cover Sholtu, Himachal Pradesh. In collaboration with the Horticulture Department, Krishi Vigyan Kendra and the local panchayat, we successfully established a vibrant community apple orchard.

175+

Households benefitted in Kinnaur

From conflict to coexistence and harmony

In the village of Kendudihi, Barbil, Odisha, 59-year-old farmer Lakhan Kumbhar, with a family of four, battled nature's challenges. Relying on his three-acre fertile land beside a river, Lakhan's livelihood was constantly threatened by elephant attacks and unpredictable weather. Lakhan had all but given up hope on farming and like many other farmers in his village, was on the verge of quitting farming altogether.

JSW Foundation supported Lakhan to find solutions to help mitigate the substantial losses being faced by farmers in the area. Through our Holistic Cluster Development program, Lakhan received training, irrigation support and a solar fencing solution to protect his crops from the elephants. With expert guidance and improved agricultural practices like farm-based deterrents, his productivity by 50%.

After the interventions, Lakhan's income increased from ₹ 120,000 to ₹ 250,000 annually, making him financially stable. His success story has also inspired other farmers in his village, encouraging them to persevere and resume farming.

I feel incredibly fortunate to have received comprehensive support from JSW Foundation, which empowered me to protect my field and enhance my production.

- Lakhan Kumbhar





EDUCATION

By providing access to quality education, we empower each child, developing a lifelong passion for learning.





Towards quality education

By ensuring access to a safe, inspiring and well-equipped learning environment for our children, we lay the foundation for their brighter future. With the right support and resources, children can overcome barriers and pursue their dreams towards a future filled with hope, innovation and boundless potential.

JSW Foundation implements innovative programs to elevate the quality of education and cultivate a lifelong passion for learning in children. Adopting a lifecycle approach and through strategic collaborations, we work to ensure accessible and high-quality education for every child. Our efforts focus on nurturing academic excellence along with providing essential life skills and empowering young minds to help them thrive and contribute meaningfully to society.

Key interventions

Transforming infrastructure, empowering futures

Early Childhood Care and Education (ECCE)

JSW Udaan Scholarship

JSW ASPIRE and JSW Smartshala

Roof to Dream

Jindal Education Trust



Transforming infrastructure, empowering futures

Our comprehensive infrastructure development projects focus on renovating dilapidated schools and constructing new ones equipped with state-of-the-art facilities. This includes equipping schools with science laboratories, digital classrooms, libraries, essential educational aids, better Water, Sanitation and Hygiene (WaSH) facilities, as well as refurbishing toilets and incorporating the provision of sanitary pad dispensers for improved menstrual hygiene management.

Holistic approach impacting Early Childhood Care and Education (ECCE) outcomes

Collaborating closely with parents and community members, we focus on early prevention and intervention in health and nutrition during the crucial early childhood years as contributing factors when children are in their formative learning years. Training is also provided to Anganwadi workers to enhance their capacity, enabling them to provide optimal care. We track essential progress indicators, recognising the profound impact they have on a child's growth and development. Through these multifaceted initiatives, we are committed to shaping healthier and brighter futures for the youngest members of our communities.

283

Schools enhanced under school infra projects

54,098

Students benefitted

JSW Udaan Scholarship: Opening doors to higher education

Designed to support students based on both merit and need, the JSW Udaan Scholarship empowers young individuals to pursue higher education. In this year, we awarded Udaan Scholarships to 757 deserving students, supporting them to reach their educational goals.

2,181

Students awarded JSW Udaan Scholarships

180

Anganwadis developed



JSW ASPIRE and JSW Smartshala: Building capacities among students

To drive change in primary and secondary education, we have introduced two impactful programs, JSW ASPIRE, Adolescent School Program to Inspire, Relate and Enrich and JSW Smartshala.

The Tamanna School caters to students with special needs, supporting them with education, life skills and opportunities to learn and grow.

These initiatives focus on improving students' foundational literacy and numeracy (FLN) and life skills, nurturing them to grow into resilient and confident individuals.

9,418
Students benefitted through JSW Smartshala

259
Students empowered for a brighter future through JSW ASPIRE



JSW Sath-Do: Making learning fun in schools

JSW Foundation initiated JSW Sath-Do, a program dedicated to empowering Grade III to Grade VII students in government schools within Sandur block, Ballari district, Karnataka, in collaboration with Step Up for India.

Under this program, Foundational English lessons are provided to build students' confidence in learning independently.

Additionally, we train government teachers to make their classes more engaging, which helps students improve their reading, comprehension and conversation skills.

1,387
Students improved their reading, comprehension and conversation skills

Roof to Dream: Enabling safe environments to nurture young minds

Our 'Roof to Dream' initiative is aimed at enabling children to attend school regularly by mitigating the challenge of leaky and dilapidated roofs, which would otherwise prevent them from attending school. By fortifying the infrastructure of rundown schools with steel-coated roofs, we ensure that these children get uninterrupted education, enabling these young minds to dream and pursue their goals without any infrastructural hindrances.

4,967
Students benefitted from an enhanced learning environment

Jindal Education Trust: Building a strong foundation

The Jindal Education Trust (JET) provides support to numerous educational institutions with Jindal Vidya Mandirs (JVMs) and the Tamanna School. These flagship schools offer a modern curriculum, supported by excellent infrastructure facilities. Students in these schools are groomed for a future with a vision of 'Every Day, Every Child, A Leader'. The Tamanna School caters to students with special needs, supporting them with education, life skills and opportunities to learn and grow.

All our JVMs have been awarded the ISO 9001:2000 certification, a key milestone in achieving the vision of providing quality education for leaders of the 21st century.

2,345
JVM students benefitted

148
Tamanna School students benefitted

An enthralling journey from struggle to success

A student of class IX at GHS Kabulal school in Ballari, Karnataka, Kavita was very fond of going to school. But despite this, she grappled with reading, understanding and language fluency.

Kavita story took a remarkable turn when she became a part of JSW Foundation's Aspire Adolescent Education Program, in collaboration with Magic Bus India Foundation. This innovative program, which is focused on instilling essential life skills such as confidence and teamwork, provided Kavita with a supportive and safe learning environment. Through interactive sessions on life skills and academic educator sessions, she gained confidence and was able to improve on her weaker subjects.

In subsequent sessions, she was encouraged to share her ideas and thoughts and was also encouraged to participate in school drawing competitions. By showcasing her talent, she gained confidence. Her active engagement earned her well-deserved rewards in school as well. Her project on numeracy shapes was showcased during JSW Foundation's Aspire Foundational Literacy and Numeracy (FLN) program exhibition. Engaging in summer camps further enhanced her interactive skills. Her dedication paid off when she advanced from Level 1 to Level 3 during the annual assessment.

Kavita determination and growth have not only transformed her own life but have also inspired her classmates.

Note: Names have been changed to protect identities.





SKILLS AND LIVELIHOODS

We envision a future where communities prosper as people's skills align with market needs. By encouraging sustainable livelihoods, we empower our communities to contribute towards shaping a vibrant and self-sufficient nation.





Creating opportunities for all

Skill development is a national need. Through our vocational training programs for youth and women, we are shaping a skilled and self-reliant workforce for the nation's future.

JSW Foundation provides vocational skills training to empower communities with sustainable livelihoods. We bridge the gap between community aspirations and market demands through our innovative skill development models, such as the Recruit-Train-Deploy (RTD) model, Micro-Entrepreneurship Development and Self Help Groups (SHGs). These models equip individuals with practical skills, promote women's economic empowerment and are facilitated through various JSW Foundation initiatives.

Prioritising a diversified approach, we focus on training, certifying and placing individuals to ensure they acquire the necessary skills and become job-ready and resilient in the workplace. By emphasising market linkages and convergence, we create sustainable opportunities for community improvement.

Key Interventions

Skill Impact Bond

Project Charkha

Applique work initiatives

JSW Shakti

Skill Impact Bond: Towards a skilled India

With a shared vision of an 'employment ready' young India, we have partnered with the National Skill Development Corporation (NSDC) and other partners to launch India's first Skill Impact Bond.

The USD 14.4 million Skill India Impact Bond aims to support 50,000 young people in India over four years, with 60% being women and girls, equipping them with essential skills, training and avenues for wage employment in sectors such as retail, apparel, healthcare and logistics.

4,411

Trainees enrolled and 88% certified under Cohort 1

6,530

Trainees enrolled in Cohort 2

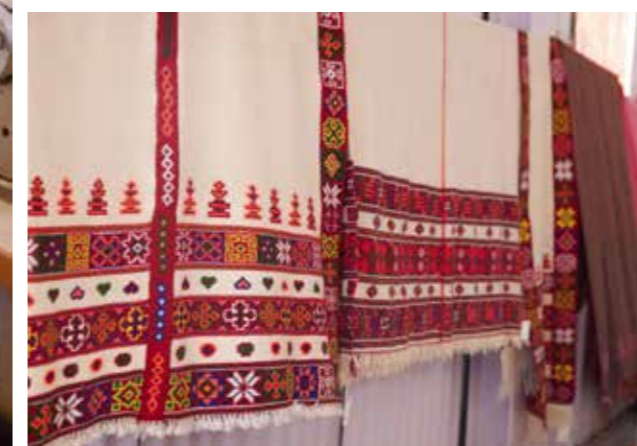
69%

Skilled trainees are women

Our partners



1. National Skill Development Corporation (NSDC) | 2. British Asian Trust | 3. Michael and Susan Dell Foundation | 4. Children's Investment Fund Foundation | 5. HSBC India | 6. Dubai Cares | 7. Foreign, Commonwealth and Development Office (FCDO) (Technical support to the UK government) | 8. United States Agency for International Development (USAID)



Project Charkha: Key to self-reliance

Under Project Charkha, JSW Foundation trains women in traditional handloom weaving at its vocational training centre in Kinnaur Valley, Himachal Pradesh, supporting sustainable livelihoods.

Kinnauri products, such as shawls and stoles, woven with pure woollen yarn, are renowned for their intricate and fine craftsmanship. We equip women with a diverse skill set, encompassing product development, crafting viable business strategies, marketing products, developing designs, honing soft skills and establishing crucial market linkages.

430+

Women trained at Sholtu and Kutehr in Himachal Pradesh

Weaving a future of opportunities

In Barmer, Rajasthan, we boost the skills and livelihoods of rural artisans across three Gram Panchayats by creating supportive ecosystems for innovative handicrafts. The focus is on promoting traditional handicrafts such as applique and mukka art, generating new livelihood opportunities, and sustaining the ecosystem through innovative employment and enterprise connections.

500

Women artisans skilled and supported



Empowering youth with maritime skills

JSW Foundation has collaborated with Tech Mahindra Foundation at Paradip, Odisha, to deliver an extensive three-month residential programme focused on equipping participants with essential skills in cargo handling and port operations, along with placement assistance. All 23 youth who successfully completed the training have secured positions in diverse companies across India, specialising in port operations and logistics.

23

Youth secured employment post training

Women-led microenterprises leading the change

In Paradip, our initiative champions women-led microenterprise development through a distinctive approach that intertwines sanitation with livelihoods. The establishment of Micro Enterprise for Sanitation and Health (MESH), a women-led enterprise consisting of 10 members, integrates food kiosks and sanitation facilities, with the former providing livelihood opportunities for women.

JSW Shakti

JSW Shakti is our rural women-only BPO aimed at empowering rural women in IT-enabled services. JSW Shakti trains and skills women so they can earn sustainable, dignified livelihoods. In F.Y. 2022-23, 1,200 women were trained and among them, 300 were employed. JSW Shakti served organizations in the Banking, Financial Services and Insurance (BFSI) sector.

1,200

Women trained

Stitching a better future for all

Sushiya Devi, aged 42 years old, lives with her family of seven in Genhu village in Barmer district, Rajasthan. She would earn a meagre living of around ₹ 1,000 to ₹ 1,200 annually from her applique work, after paying commissions to agents and vendors.

However, her life took a transformative turn when she joined Desert Pastoral (DP), an artisan company promoting and strengthening women artisans, championed by JSW Foundation's CSR initiative. Associating with a more formal setup, she started earning better money for her work, which, in turn, increased her confidence and motivated her to work harder.

The assistance from DP enabled Sushiya to financially support her family's income. Her annual income from applique work increased from ₹ 1,200 to ₹ 12,000 annually. With this enhanced income, she ventured into livestock management, acquiring two goats and two sheep, thereby securing an additional annual income of ₹ 30,000 for her family.

Grateful for the exposure and with support from JSW Foundation, Sushiya honed her skills, becoming an expert in various forms of applique work, from cushion covers to sarees. With earnings directly credited to her bank account and with training in financial literacy, she now manages her finances independently.

In addition, she also founded the Ramdev Group, an SHG consisting of 17 women from her community. Serving as the group's president, she allocates tasks among members and conducts monthly meetings where artisans can openly discuss their challenges and provide suggestions.



Earlier, I only worked; now, I learn things that will help me throughout my life. Working in a group helps me interact with other female artisans and encourage them.

- Sushiya Devi



ART, CULTURE, AND HERITAGE

In every brick restored and every cultural treasure preserved, we are shaping the narrative of a nation that understands the value of its past as it builds an extraordinary future.



Preserving India's cultural heritage

We believe, to imagine a vibrant future, one must be firmly rooted in the richness of the past. We see ourselves as custodians of a legacy that spans centuries. Our commitment is evident in the heritage restoration projects we have undertaken across the country.

Conserving and restoring the Mughal Gardens of Kashmir

JSW Foundation, in collaboration with the Government of Jammu and Kashmir (J&K), is engaged in a pioneering effort to conserve and restore Kashmir's scenic Mughal Gardens, specifically Shalimar Bagh and Nishat Bagh.

Employing an integrated and multidisciplinary approach, this initiative marks a significant stride in safeguarding and maintaining J&K's rich cultural legacy. Recognised as a new beginning in cultural conservation, the project's upcoming phase focuses on providing innovative design solutions for visitor infrastructure, including signage and street furniture, ensuring a thoughtful and immersive experience for all.



Restoring the iconic David Sassoon Library and Reading Room

JSW Foundation undertook the restoration and conservation of the iconic David Sassoon Library and Reading Room nestled in the heart of Kala Ghoda, Mumbai's historic art deco precinct. The iconic structure is a Grade I Heritage building and is one of the oldest educational institutions in the Victorian Gothic and Art Deco Ensembles of Mumbai's UNESCO World Heritage precinct.

Along with providing technical assistance for this ambitious project, we have partnered with Hermès, the Kala Ghoda Association, the Consulate General of Israel in Mumbai and others to collectively ensure the successful restoration of this cultural landmark.



Scholarships for artists

Sangita Jindal Scholarship for performing arts

The Drama School, Mumbai, has initiated a transformative opportunity for aspiring students enrolling in its one-year programme for Acting and Theatre Making with the Sangita Jindal Scholarship.

This scholarship supports five selected students to help them realise their aspirations for a career in the performing arts. By championing the cause of quality and inclusive education, the Sangita Jindal Scholarship ensures that talented individuals can pursue their passion, irrespective of financial constraints.

The students who have secured the Sangita Jindal Scholarship during this academic year are:

Princy Sudhakar
Thrissur, Kerala

Tanushree Agrawal
Mathura, Uttar Pradesh

Rahul Soni
Jorhat, Assam

Vishal Gaurav
Patna, Bihar

Raja Nagar
Ghaziabad, Uttar Pradesh

Sangita Jindal Scholarship Scheme for sculptors

In collaboration with the Bombay Art Society, JSW Foundation has introduced the Sangita Jindal Scheme for Metal Sculptors, a five-year initiative aimed at supporting young talent specialising in metal sculpture for visual arts and continued art education.

Recipients of this scholarship will be felicitated during the inauguration of the Bombay Art Society's annual show, where they will also showcase their work in the invitee category. This initiative underscores our commitment to nurturing emerging artists and promoting innovation in the field of metal sculpture.

Support to the National Centre for the Performing Arts

As committed patrons of the arts, JSW Foundation has extended its support to the National Centre for the Performing Arts (NCPA), Mumbai, India's premier cultural institution, since its inauguration in 1969.

Recognised as the first multi-venue, multi-genre cultural centre in South Asia, the NCPA has led the way in preserving and promoting India's diverse artistic heritage in music, dance, theatre, film, literature, and photography as well as presenting new and innovative work by Indian and international artists from a diverse range of genres including drama, contemporary dance, orchestral concerts, opera, jazz and chamber music.



SPORTS PROMOTION

Our goal is to develop rural sports while providing sports talent in the country with world-class facilities, training, education and nutrition. We have crafted unique sports' programs to bring about a profound transformation in the realm of sports in India.



From challenges to champions

The journey of an athlete is difficult, particularly when hailing from rural areas where there are numerous challenges and lack of opportunities. At JSW Foundation, we not only acknowledge the immense talent these athletes possess but also ensure they have access to all the essential facilities they need to thrive.

Our commitment lies in empowering diverse communities through our dedicated efforts to cultivate sports development at all levels.

We approach sports holistically, taking every possible measure to enhance our youth with ample training opportunities, coaching, nutritional support and education. Presently, our sports promotion initiatives include football, swimming, cricket, badminton and mallakhamb training. Through these programs, our athletes proudly represent us both at various competitions as well as at both national and international levels.

Key interventions

Inspire Institute of Sports

JSW Swimming High Performance Centre, Odisha

Transforming sports in Nagpur, Maharashtra

Project Shikhar



Inspire Institute of Sports

As India's premier privately funded High Performance Centre for Olympic sports disciplines, Inspire Institute of Sport (IIS) stands as a testament to our commitment towards promoting sports among the youth. Spread over 42 acres of land in Vijayanagar, Karnataka, IIS serves as the nurturing ground for over 200 talented young athletes from across India, focusing on Olympic sports such as athletics, boxing, judo and wrestling.

At IIS, athletes are immersed in a world-class training environment equipped with cutting-edge infrastructure, coaching expertise, and state-of-the-art sports science equipment. This environment empowers these capable athletes to realise their full potential.

In FY 2022-23, 230+ athletes were being trained at IIS. The Institute boasts of 18 National Record holders and 75+ National Champions who are part of IIS. Since inception, a total of 1,000+ National and International medals have been won in judo, boxing, track and field sports and swimming across all centres.

230+

Young athletes undergoing training at IIS

1,000+

National and international medals won in judo, boxing, track, field sports and swimming across all centres

JSW Swimming High Performance Centre, Odisha

JSW, in collaboration with the Government of Odisha, has implemented programs for developing swimming in the state. The programs include supporting High Performance Centres (HPC), grassroots training centres and many more. The Odisha JSW Swimming High Performance Centre (OJSHPC) is located at the Biju Patnaik Swimming Pool Complex in Kalinga Stadium, Bhubaneswar. It is part of a network of HPCs being set up under the umbrella of IIS. In addition to this, JSW has set up nine grassroots swimming centres across the state. So far, more than 10,000 sports talents have been benefitted through this support.

10,000

Athletes benefitted

1,277

Athletes enrolled

Transforming sports in Nagpur, Maharashtra

We have partnered with Nagpur's TKSS College and Kalmeshwar District Sports Office (DSO) to renovate TKSS' existing badminton centre. Over the next five years, we are dedicated to ensuring the holistic growth of athletes, along with the operation and maintenance of the facilities. Eventually, the responsibility will be handed over to TKSS College.

Collaborating with the DSO, we have also developed a cricket ground, covering all expenses related to its development and the recruitment of manpower such as security guards, housekeeping and support staff. This ground now serves as a valuable asset to players from Kalmeshwar Block.

Moreover, in conjunction with the DSO, we have also developed kabaddi and volleyball grounds. This initiative aims to promote these sports among students and increase their participation in them.

Project Shikhar

JSW Energy's flagship initiative, Project Shikhar, was kickstarted to hone the boxing talent of young children in the Sangla Vally of Himachal Pradesh. The project strives to prepare these budding athletes for high-level sporting events. Earlier, these aspiring boxers faced limitations due to inadequate resources and lack of opportunities. We endeavour to change this scenario and help them in every possible way, right from nutrition to equipment, training of local coaches, deployment of coaches and financial assistance through the Shikhar Fellowship.

60+

Boxers from all five Shikhar centres participated in the Inter-Shikhar Boxing Championship 2022

97

Shikharites participated in 10 competitions in FY23

India's fearless fighter

Kashish Negi has rightfully earned her reputation as India's fearless fighter! Hailing from the picturesque yet serene village of Kinnaur in Himachal Pradesh, she faced numerous early hurdles. Despite these challenges, she tenaciously pursued her passion for running and ventured into the world of sports. During a casual stroll one day, Kashish encountered senior boxers during their rigorous training sessions. Their mastery captivated her, compelling her to step into the world of boxing.

an international level. She showcased her prowess at the prestigious 40th Golden Glove of Vojvodina Men's and Women's Youth Boxing Tournament in Serbia in September 2022.

Her unwavering determination led her to secure the bronze medal, a testament to the notion that dreams indeed have the power to transport individuals to incredible heights, provided they possess the courage to persist.

Subsequently, she enrolled at the Government Middle School in Sangla, which offered boxing training through JSW Foundation's Shikhar Centre. With meticulous coaching, nutritional support and tailored guidance, Kashish devoted herself to relentless hard work, ultimately achieving her dream of representing India at

"The boxing training at JSW Foundation's Shikhar Centre became my pathway. With dedicated coaching and support, I was able to make my dream a reality."

- Kashish Negi



Football



Football training at Jajang Mines, Odisha

We have devised a comprehensive plan for the holistic development of football. At Jajang Mines in Odisha, 50 youth were selected (25 boys and 25 girls), receiving coaching and a range of additional benefits. These include regular nutritional support, high-quality sports kits, and the guidance of two coaches.

50

Youth coached in football

Notably, three players secured spots at the Sports Hostel Government of Odisha, while five were selected for the NITA Football Academy. These institutions offer comprehensive residential support, covering higher education, sports training, and nutritional needs.

Expanding our model to Nuagan, Narayanposi, and Gouva, we reached 150 players. Five players from this group competed at the national (Sub-Junior National) level in Belgaum, Karnataka. Bandana Nayak scored five goals in the Sub-Junior National, and Rubina Naik's outstanding performance in the Junior National earned her a spot in an international game in Dubai as an invitee.

150

Players coached in football

Transforming football in Odisha

Young football talent is being promoted in Odisha through training, equipment, nutrition and guidance support from talented coaches. Football competitions are regularly organised to promote talent and foster sportsmanship in these footballers. Participation in different inter and intra-district sports programs has provided these budding footballers with a wide range of exposure for these budding footballers. The teams from across various locations have displayed great fervour by winning some of these tournaments. Along with providing training support, the players are also given proper diets and taught the power of nutrition under the 'Khao and Khelo' initiative which helps instil confidence among the little champions.

Promoting football in Palghar, Maharashtra

We have been championing football in Maharashtra's Palghar district through the Palghar District Football Association (PDFA), an official governing body associated with the Western India Football Association (WIFA). Under this initiative, 60 football clubs were registered with the PDFA this year.

60

Football clubs registered

To date, 1,150 players were engaged in competitions, while 86 teams participated in various championships. Around 267 matches were played this season. We also hosted the Western India Football Association (WIFA) Inter-District Senior Women's Championship for Maharashtra State with active participation from 17 districts.

1,150

Football players engaged in 86 competitions

By encouraging local talent to participate in local events, facilitating rigorous training, and providing sports equipment to grassroots clubs and aspiring athletes, we are nurturing the youth in Palghar to take up high-level sporting events. Up until FY23, over 150 players have received free football training supported by JSW Bengaluru Football Club (BFC).



Swimming

JSW swimming program, Odisha

Our school swim program is operational in 39 schools in multiple districts in Odisha. With the assistance of the Secretary of Sports, Sports and Youth Services Department (DSYS), Odisha, swimming classes were added as a part of the students' curriculum. Around 90 children between the ages of seven to 10 will attend swimming classes during school hours. In FY23, 1,277 athletes enrolled in the program. Our aim is to reach 3,000 swimmers by 2024.

1,270+

Athletes enrolled for swimming classes



Athletics

Athletics ground at Jindal Vidya Mandir, Vijayanagar, Karnataka

We have transformed the athletics ground at Jindal Vidya Mandir (JVM), Vijayanagar, Karnataka from an artificial turf to a natural one. This enhancement stands to benefit 1,600 JVM students, improving their health and honing their talent.

Specifically designed for students preparing for the Police Recruitment Exam, the track caters to approximately 70 to 80 students, both girls and boys, who use it for running practice. Impressively, 18 students who diligently trained on this track daily successfully passed the physical exam and have been recruited as police officers in various zones.

1,600+

Students benefitted

Pay and Play program

Under this program, selected trainees receive a host of benefits, including regular nutritional diet support, high-quality sports kits, and professional coaching sessions. Many of these young athletes have evolved into promising sports personalities, participating in numerous inter-district and local tournaments. Remarkably, an average of 4,000 athletes register monthly for the Pay and Play Program. Currently, 13 centres are operational across Odisha, with plans to add six more centres within the next eight months.

The combination of regular practice, tournament engagements and facilitation of nutritional support and sports kits have enabled these trainees to compete at the state level.

4,000

Athletes registered



Kickboxing

JSW Foundation has supported kickboxing players, enabling them to showcase their talent at the World Association of Kickboxing Organizations (WAKO) India Senior and Master National Kickboxing Championship in Chennai. The team excelled, securing one gold and three bronze medals. Moreover, in the Khelo India Kickboxing Women's League in Rourkela, our players clinched 15 gold, nine silver, and 15 bronze medals.

These achievements underscore our commitment to fostering talent, providing opportunities, and promoting holistic development through sports across various regions.

Mallakhamb

The Mallakhamb project is presently underway in 14 schools in Shahapur Taluka, Maharashtra, aiming to revive the dying traditional gymnastics art. These schools have been equipped with the necessary equipment, including a Mallakhamb pole,

two Mallakhamb ropes and six mats. Additionally, sports teachers in these schools have received training complemented by a dedicated instructor who conducts weekly visits to oversee their progress.



Rising high

Mallakhamb, a traditional Indian sport, involves gymnasts performing yoga and gymnastic postures on a vertical pole. The name comes from 'malla' for wrestler and 'khamb' for pole, symbolising its use as a training implement for wrestlers. The pole, typically made from Indian rosewood, can also be substituted with cane or rope in alternate versions of the sport.

To promote Mallakhamb, we organised two demonstrations with 460 students from 16 schools. Additionally, in collaboration with our knowledge partner, Shree Samarth Vyayam Mandir, we conducted a comprehensive 10-day training session for sports teachers.

460

Students learning Mallakhamb



SPECIAL PROJECTS

From grassroots initiatives that promote self-reliance and inspire individuals to become proactive agents of progress within their communities, our initiatives are creating tangible change as well as advancing the future of public policy in India.



Advancing the future of public policy

Embarking on the forefront of change, we are dedicated to advancing the future of public policy. Through innovation and collaboration, we strive to shape a more progressive and impactful tomorrow.

JSW School of Public Policy: Shaping the future of public policy in India

Established in February 2023, the JSW School of Public Policy (JSW-SPP) at the Indian Institute of Management Ahmedabad (IIMA) serves as a Centre of Excellence founded by the JSW Group. Our primary aim is to revolutionise the field of public policy through cutting-edge research and training future policy practitioners.

Through JSW-SPP, we are dedicated to evolving into an influential, research-driven think-tank and premier policy training institute in the region.



JSW Foundation Fellowship: Nurturing leaders of tomorrow

JSW Foundation Fellowship is a transformative two-year youth leadership program, specifically designed to hone the country's most promising young individuals. We empower and guide them as they tackle the most pressing challenges our communities face today and nurture their strong commitment towards driving social change.

During this personalised leadership journey, JSW Foundation Fellows gain the knowledge and skills to form their own perspectives on rural and social development. Currently, 12 Fellows are working across five JSW locations, where they are actively engaged with the community through various projects, facilitating change at the grassroots level.

Projects undertaken by JSW Foundation Fellows

- 01 Education
- 02 Women empowerment
- 03 Health and hygiene
- 04 Water and sanitation
- 05 Sustainable livelihoods
- 06 Community development

Project Sakhi: Rebuilding lives by creating opportunities

In Karnataka, JSW Foundation works to uplift women from vulnerable communities through Project Sakhi, offering holistic support and instilling hope for a brighter future. Women receive vital health counselling and engage in health awareness sessions. They attend parental counselling to gain a better understanding of their children's education, accessing government schemes and training in alternative vocations.

In partnership with EcoKaari, we have initiated a plastic offsetting and livelihood generation program in Vijayanagar. This initiative offers financial opportunities for women while contributing towards environmental sustainability. Through our collaborative efforts, we have been able to upcycle over 4,000kg of multi-layer plastic per month, transforming it into unique handcrafted products.

Alongside this, we are providing comprehensive vocational training to young girls, equipping them with valuable skills for a brighter future and ensuring a lasting impact for future generations.



350+

Women supported

4,000 kg

Multi-layer plastic upcycled monthly into handcrafted products



Project Margdarshak: Facilitating access to government schemes

Project Margdarshak facilitates access to government schemes for individuals. We use an innovative technology platform to serve as a hub for meticulously researched state-specific schemes. These include detailed information on eligibility requirements, application procedures and other essential details.

99,210+

Individuals supported through JSW Steel

18,975+

Individuals supported through JSW Energy

34,700+

Individuals supported through JSW Infrastructure



Spotlight on excellence

These awards serve as motivation, propelling us to continue our mission of positive change and foster empowerment in communities worldwide.



HelpAge India Plaque of Recognition 2022

Awarded to JSW Foundation's work in supporting the cause of the elderly



Constellations Award 2023

Awarded to JSW Foundation's Skill Impact Bond



CSR Champion Award 2023

Awarded for collaborations on high-impact initiatives, and continuing to drive social change



Unified vision, collaborative impact

JSW Foundation works with different stakeholders and partners, maintaining a strong relationship through open, transparent, and responsive dialogue. Our engagement helps us prioritise and understand emerging issues that need to be addressed.



Our partners



Unified vision, collaborative impact



Meet our leadership



Sangita Jindal
Chairperson,
JSW Foundation



Tanvi Jindal Shete
Managing Trustee,
Jindal Education Trust



Ashwini Saxena
CEO, JSW Foundation



Harshvardhan Nawathe
Chief Operating Officer,
JSW Foundation



Rahul Dev
Chief Operating Officer,
JSW Shakti



Siddhi Sanghvi
Chief Program Officer



Vikram Kothari
Head - Finance



Dr. Asheesh Jain
Head - Health and Nutrition



Rupa Dawane
Head - Water, Environment
and Sanitation



Dhiren Thaker
Head - Waste Management



Mahesh B. G.
Head - Agriculture and
Allied Livelihoods



Savita Mundhe
Head - Education



Shyam Narayan
Head - Monitoring
and Evaluation



Piyush Thakkar
Head - Procurement



Priyanka Bhosale
Branding
and Communications

Location heads



Hemant Kumar
Head - Barmer, Rajasthan



Sidramappa Kalshetti
Head - Vasind and
Kalmeshwar, Maharashtra



Sudhir Tailong
Head - Dolvi, Maharashtra



Anil Dadhich
Head - Ratnagiri, Maharashtra



Amol Suryawanshi
Head - Tarapur, Maharashtra



Deepak David
Head - Sholtu,
Himachal Pradesh



Prasanta Biswal
Head -
Bhubhaneshwar, Odisha



Vishal Raj
Head - Jharsuguda, Odisha



Bharathi Palanisamy
Head - Salem, Tamil Nadu



Peddanna Beedala
Head - Vijayanagar, Karnataka



Jitender Thakur
Head - Kutehr,
Himachal Pradesh



Sabal Kumar Jha
Head - Barbil, Odisha



Abhijit Mohanty
Head - Paradip, Odisha

Vision FY24: Better Everyday

JSW Foundation is driven by a vision to make a significant difference in the lives of the communities we serve. We are scaling our programs and deepening their impact, introducing innovative approaches tailored to the specific needs of each community.

Our focus remains clear: to embrace holistic interventions while striving for progress every single day. We see 2024 as a year of vibrant collaborations that will shape our future, setting new standards and paving the way for ground-breaking social development initiatives.

We envision a future where every community we touch thrives and is empowered.





Reach communities with holistic health and nutrition interventions.




Make communities self-reliant with water, securing livelihoods.



Multi-fold vision for communities




Nurture youth as future sector leaders and sports trailblazers.




An effective 360-degree waste management program for healthier futures.

Move towards a greener country informed by indigenous knowledge.




Enhance support for communities to build sustainable livelihoods through agriculture, skilling and handicrafts.




Ensure children receive uninterrupted education with a lifecycle approach.



JSW Foundation

JSW Centre, Bandra Kurla Complex (near MMRDA Grounds),
Bandra (E), Mumbai - 400 051, Maharashtra, India.

Website: www.jsw.in/foundation

Phone: 022 4286 4033